

BETH EL NEWS

January - February 2017



Hazzan Alisa Pomerantz-Boro

I spend my life listening to voices. I listen for your voices when we daven. I hear the voices of those who came before me and I am inspired by the history and passion of their prayers. I listen to every Torah reader. I listen to B'nai Mitzvah students. One of the

highlights of my week is singing with our Early Childhood Center for Shabbat. I love singing with our special needs population. I listen to your insight when we study together. I hear you when you come to me to pour out your heart. I love hearing your stories and your Jewish journeys and learning how you met your partner and fell in love. I listen with a full heart as you share remembrances of your family members who have passed. I listen when you laugh and I listen when you cry. I relish the sound of growing confidence as you challenge yourselves. I admire the dedicated voices of our choirs. I believe that Gd's presence infuses our world when every voice is heard.

That is why, when I began thinking about my installation as the International President of the Cantors Assembly, I chose the theme Every Voice. It is important to me for every voice to be present. So much so, that I chose to produce a gala Every Voice Concert at our beloved shul on Wednesday, May 24 at 7 pm so I may share this momentous occasion with you, my Beth El family! Highlights will include the Clergy Boys, Divas on the Bima, the "Hamilton Cantor", and the premier of a piece commissioned specially for this

event, Kol Kol, Every Voice. The power of 200 plus Hazzanim will join your voices to permeate the walls of our shul. Our voices signal the strength of our community. This power was palpable to me as I celebrated the B'nai Mitzvah of my children, Rebecca and Joshua, with our entire Beth El Family. The voices of our community give us strength when we need it. They give us courage and faith, and only sound perfect when we are all singing together.

I have always felt that my voice mattered. I feel extraordinarily grateful to have been raised in a loving, Jewish home; embraced by my loving community. As the daughter of a rabbi and a Jewish educator, I was given the opportunity to speak, to question and to lead. I learned that everyone's voice deserves attention. To make a difference in the world, each of us has to find our own voice. The personal triumphs and tragedies we each face modulate our voice. When I became a mother to my very special and miraculous Rebecca, that message was brought home in a very real way. My responsibility, both as a mom and as a Hazzan, is to enable every voice to be recognized for the blessings that it brings. For the insecure or shy student, for the nonverbal who uses a device to be heard, for the grandmother reading Torah for the first time, for the Russian immigrant celebrating in freedom, for the battered and the broken; every voice deserves attention.

Our shul is filled with wonderful voices. Each voice is distinctive, yet can weave in and out of the collective sound. When we raise our voices together in song with others, we allow the power of music to express the deepest hopes and prayers for all people, for every voice.

IN THIS ISSUE:

★ CoLeL	2	★ Religious School	9
★ President's Message	4	★ Minyan Times	10-11
★ In Memoriam	6	★ Member Spotlight	12
★ Sharing Our Lives	6	★ Arms & Clubs	14-16
★ Mazal Tavs	7	★ Contributions	17-20
★ Early Childhood Center	8	★ Directory	23



ARI SACHER
Inside Israel's Missile Shield
January 26 - January 29

**This edition of the Beth El News is sponsored in appreciation of Andrew Rowan.
Thank you for all you do for Beth El!**

For information on sponsoring future editions of the Beth El News, contact Davida at dchornock@bethelsnj.org

COLEL

It is hard to believe that we are in the midst of planning our Winter Scholar in Residence Program. Our Fall Scholar in Residence Program with Rabbi Gershom Sizomu, the leader of the Abayudaya Jewish community of Uganda, Sara Zebowitz, National Director of Habonin Dror America, and Rachman Nagwere, an artist from the Abayudaya community was an incredible success. It was fascinating learning about the Jewish community in Uganda and we look forward to maintaining our relationship with the Abayudaya Community.

Beginning Thursday, January 26 we will welcome our winter scholar, rocket scientist Ari Sacher. Throughout the weekend Sacher will be speaking on The Miracle of Israel's Life-Saving Missile Defense Technology. For more information and sponsorship opportunities, please see the insert or visit www.bethelsnj.org/ari-sacher/

If you would like to get involved in our wonderful CoLeL programming, please do not hesitate to call or stop by. My door is always open. I look forward to a year of nourishment.

Rabbi Nogah Marshall, Educational Director

Welcome the newest members of our Beth El family!

- ★ Leora Waiche ★
- ★ Sarah Walder ★
- ★ Morris & Diane Weiner ★

NEW!

Celebration Shabbat!

Join us the first Friday of every month for a special Shabbat service celebrating members with birthdays and anniversaries in the coming month

5:30 PM Proneg (pre-Shabbat reception)
6 PM Shabbat Service

Friday, January 6
Friday, February 3

Letters were mailed out in January to those in our database with birthdays and anniversaries. If you did not receive a letter, but should have, please contact Davida Chornock at dchornock@bethelsnj.org.

Boost your business and support Beth El at the same time.

1/8 Page ad—\$450 for one year	1/4 Page ad—\$850 for one year
1/2 Page ad—\$1250 for one year	Full Page ad—\$1800 for one year

Single issue ads are also available.

Contact Davida Chornock at dchornock@bethelsnj.org or 856-675-1166 ext. 409 for more information.

EXECUTIVE DIRECTOR'S MESSAGE - JOSH LASTER



In December we sent out a mailing to the congregation that included information about the change in fiscal year, statements for next year and letter from both Rabbi and me with testimonials from congregants. In my letter, I mentioned that “We’re All in This Together”. It was no surprise when our Marketing, Communications and Membership Specialist, Davida Chornock, correctly identified this as a song from High School Musical, a Disney movie from 2006. She’s a huge Disney fan and this is a movie from her younger years. As the father of two young children, we love to watch fun musicals/movies and this is just one of the regulars in our house. So I’m sure you understand that I can’t help it if the pop culture references of my family life permeate the thoughts I share in my role as Executive Director of Beth El. And I like it exactly like that. I want my two worlds to overlap and connect and support each other. I want those two worlds to be one world where everything is connected. To me, that’s what makes my personal connection with Judaism so awesome.

I think this is the way it works with my kids, too. They get songs stuck in their head from our Early Childhood Center or Religious School as readily as they do from pop music channels or shows. They are constantly drawing connections between their Jewish and secular lives. Maryn – my almost 5 year old daughter – wakes up just about every Monday morning and asks two questions: 1) Is it the weekend? and 2) Is it Shabbat? Isabella – my 7.5 year old daughter, recently decided to forego an 8 year old birthday party on a Sunday morning, because she didn’t want to miss Religious School on Sunday where they would be learning yet another Hebrew letter. A few Fridays ago, our topic du jour at Shabbat Dinner was singing Adon Olam to just about any tune inspired by Summer Loving from Grease. Our Jewish world and secular world are constantly colliding, and in such a positive, meaningful way. Their connection to Beth El is strong and it makes me so very happy and proud.

This is what I want for my life, this is what I want for my family, and this is my hope for everyone at Beth El. I want your worlds to collide with Beth El all of the time. Celebrate together, cry together, laugh together, let us know when you need help, reach out and share good news – just keep that connection alive at all times. I would love to say that Beth El is in touch with all of our congregants at all times, but that’s not true and that’s not possible. But what we can do is be ready at any given moment to have a conversation and be there for you. You can call, email or stop by at any time. Take every opportunity to connect your worlds – it makes everything that much better.

What connections have you made in your Jewish and secular worlds? What stories of connections with Beth El would you like to share? Send an email to jlaster@bethelsnj.org to share your story with me or set-up a time to meet for a cup of coffee (or beverage of your choice). I’d love to hear from you.

BURL-MOOR-DRIBEN ANIMAL HOSPITAL, LLC

C. J. DRIBEN, V.M.D. drdriben@bmdvets.com
IAN J. DRIBEN, V.M.D. drian@bmdvets.com
ELIZABETH E. GOEDEKE, V.M.D. drg@bmdvets.com
MEGAN L. SOUDERS, V.M.D. drmegans@bmdvets.com
KRISTEN R. BODTMANN, V.M.D. drb@bmdvets.com



856-235-2524 104 Kings Highway, Moorestown, NJ 08057 fax-856-722-9240
www.bmdvets.com



**PHYSICAL, OCCUPATIONAL,
& SPEECH THERAPY.**
FOX REHABILITATES LIVES.

Glenn Sloves, PT, MSPT
856 261 2083 Mobile
877 407 3422 Office
877 407 4329 Fax

**Physical,
Occupational, &
Speech Therapy
House Calls**

**No Homebound
Status Required**

**Medicare Part B
Provider**

PRESIDENT'S MESSAGE - LAUREN SOLL



What inspires you? Are you inspired by a story, a poem, a person or a song? Over the last 18 months, I have learned so much about our shul and what inspires different people.

The last few months, I have been particularly inspired by our beautiful and meaningful Shabbat services. We attend Shabbat services to pray, to heal and to feel connected to G-d. We strive to enhance our spiritual life to give more meaning to our everyday life. In November, my husband Jon and I celebrated our 26th wedding anniversary. To mark this milestone, we had an aliyah on Shabbat. We had the honor of sharing the bimah with other congregants celebrating simchas. Rita and Alan Kagan took an aliyah in honor of their 50th wedding anniversary. Jason Kessler took an aliyah and read Torah for his Auf Ruf in honor of his upcoming wedding to Lauren Blitz. Miriam Kessler (Jason's mother) read Torah for the first time. Dan Schwartz read Torah just a few short months after his son William became a Bar Mitzvah. Also, Nadine Litvak, who celebrated her Bat Mitzvah at mincha the week before, read Torah that morning simply because she wanted to. If that was not enough to create such an emotional atmosphere, add to the equation, the choir sang Heal Us Now, the Mi Sheberach song composed by our very own Cantor Leon Sher. The feeling I experienced during this specific Shabbat Service was a rollercoaster of emotions. But most of all, I felt inspired and truly connected to our shul.

Another meaningful Shabbat was in December when Larry Dock celebrated his 95th Birthday. Larry and his family (the Trasters) chose to attend Shabbat services to celebrate this very special milestone. Larry and the entire Traster family took various aliyot and read Torah. Larry was surrounded by the love of about 30 members of his family, including his brother, children, grandchildren and great-grandchildren. When the Rabbi bestowed a blessing upon Larry, I felt so fortunate to be in shul that day to witness this beautiful occasion.

Sharing milestones with your spiritual family during Shabbat Services is extremely special. Many people ask me what they can do to honor these special occasions. Whether you want to commemorate a life cycle event or honor friends or family, there are many opportunities available to you to create a permanent special memory and show your appreciation to the shul at the same time. For example, The Tree of Life, which is prominently displayed on a wall in our grand foyer, highlights the names of people and life cycle events for a memorable and lasting tribute. We also have personalized bricks which can be purchased on our Pathway to Inspiration that is located outside the school/main office entrance of the building. Additionally, there are various Contribution Funds that you can donate to and acknowledge any life cycle event.

It is a truly wonderful feeling when you are inspired. The stories I shared with you are just a sampling of many inspirational moments that take place at our shul each and every day. If you have an inspirational story to share about our synagogue, please email Davida Chornock at dchornock@bethelsnj.org. We are interested in your experiences and would like to share them with our congregants and maybe your story will inspire someone else.

Support our future clergy and lay leaders through Sisterhood's Torah Fund drive.

There are 2 ways to participate:

- Send a beautiful Torah Fund card for any occasion. Cost is \$4 and our card chairs will mail them for you! Contact Robin Rutberg at robin42557@yahoo.com or Melody Taylor at bubbeluv9@gmail.com
- Be a benefactor or supporter by making a donation. Send a check payable to Torah Fund to Beth El. Benefactor level support starts at \$180. Other donations accepted from \$18 and up.



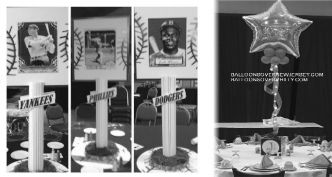
Balloon Celebrations LLC
856-346-0158



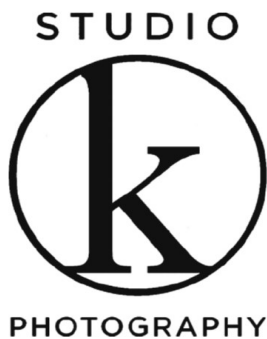
Custom Centerpieces



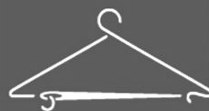
Table Linens
Chair covers
Sign in boards



856-346-0158 BALLOONSOVERNEWJERSEY.COM



modern lifestyle+
event photography
**FOR THE
BRIGHT +
BOLD**
www.studioknj.com
info@studioknj.com
facebook.com/studioknj
856.810.0088



1979 CUSTOM

custom shirts
AND MORE

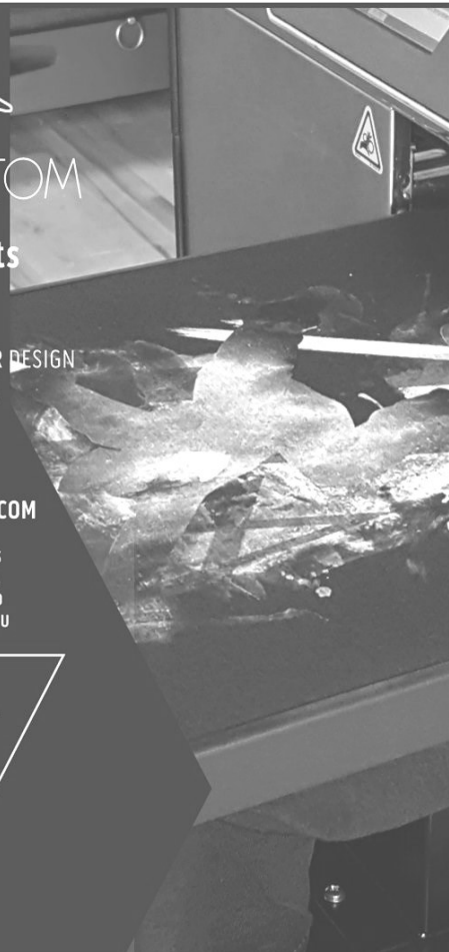
WE WILL MAKE YOUR DESIGN
FOR YOUR EVENT AN
ORIGINAL

856-291-1425
ESTBUSIN@GMAIL.COM

CALL US TODAY! DEALS THIS
GOOD DON'T LAST FOREVER.
ASK ABOUT THE FAMILY AND
FRIEND DISCOUNT WHEN YOU
CALL

10% OFF

CANNOT BE
COMBINED WITH
OTHER OFFERS
LIMIT ONE COUPON
PER CUSTOMER



**M. ROSENBLATT
ROOFING & SIDING**
WWW.SINCE1929.COM

M. ROSENBLATT ROOFING & SIDING

weathering storms. protecting dreams.

Residential

Commercial

Industrial

Locally Owned and Operated for 4 Generations

Roofing • Siding • Gutters • Gutter Protection • Powerwashing • Skylights •
Fascia Board Replacement and Capping • Soffit Ventilation and Repairs • Custom Carpentry •
Attic Fans and Ventilation • Doors • Windows • Chimney Flashing • Solar Energy Systems •
Emergency Service • Unique Custom Solar Packages Available



856-751-8656
215-288-5500
www.since1929.com



Free Estimates

Fully Insured

NJ HIC# 13VH02234300





SHARING OUR LIVES

BIRTHS:

Barbara & Eric Frantz on the birth of the granddaughter, Riley Isabelle Klapper
Sylvia Lande on the birth of her great-granddaughter, Riley Isabelle Klapper
Marcia & Bruce Tomar on the birth of their granddaughter, Harvest Gold Tomar

B'NAI MITZVAH:

Jennifer & Jeffrey Apell on the Bar Mitzvah of their son, Benjamin
Sharon & Bill Bronstein on the Bar Mitzvah of their grandson, Andrew Ravitz
Lisa Sorokin Cohen on the Bat Mitzvah of her daughter, Dana
Sheri & Gregg Feldscher on the Bar Mitzvah of their son, Will
Svetlana & Alexander Litvak on the Bat Mitzvah of their daughter, Nadine
Steve & Lynne Goldman Paul on the Bat Mitzvah of their granddaughter, Madison Paul
Phyllis & Mort Pomerantz on the Bat Mitzvah of their granddaughter, Allison Brooke Sokolic
Nicole & Andrew Poulshock on the Bar Mitzvah of their son, Gavin
Lisa Ravitz on the Bar Mitzvah of her son, Andrew
Myrna & Jeffrey Sorokin on the Bat Mitzvah of their granddaughter, Dana Cohen

ENGAGEMENTS, MARRIAGES:

Ellen & Ken Barmach on the engagement of their son Jeffrey to Jessica Cohen
Miriam Kessler on the marriage of her son Jason to Lauren Blitz
Lisa Fox & Abbey Spector on their marriage

SPEEDY RECOVERY:

Hazal Starr
Melody Taylor

BETH EL MOURNS the passing of:

Isadore Altman, father of Robert Altman
Joel Chackman, brother of Karen Dalbey
Ruth Kessler, mother of Craig Kessler
Gail Kuletsky, mother of Beth Behrend
Livia Soloman , mother of Pam Benedon
Allen Spector, father of Abbey Spector



IN MEMORIAM OF OUR MEMBERS

The Beth El Family mourns the passing of

Micki Goldberg

Mother of Jay (Marci Alboher) Goldberg &
Suzy (Michael) Appelbaum

The Beth El Family mourns the passing of

Bernice Gothard

Mother of Alan (Jodie Hoffman) Gothard &
Sharon (Ned) Weisman

MAZAL TOV

To all our B'nai Mitzvah of January & February

Devyn & Jessica Levin	<i>January 7, 2017</i>	Shira Weiss	<i>February 11, 2017</i>
Mitchell Krupnick	<i>January 14, 2017</i>	Ethan Natkin	<i>February 25, 2017</i>
Danya Weinstock	<i>January 28, 2017</i>	Gregory Finberg	<i>February 25, 2017</i>
Isabella Levin	<i>February 4, 2017</i>	Andrew Lowenberger	<i>February 26, 2017</i>



Andrew Ravitz

Son of Lisa Ravitz & Jason Ravitz

Brother of Jessie Sloane

Grandson of Sharon & Bill Bronstein

Mitzvah Project: Cooked meals for the homeless



Mitchell Krupnick

Son of Tami & Brad Krupnick

Brother of Sydney

Mitzvah Project: Participated in *Pitch in for Baseball* - collected new and gently used baseball equipment for underprivileged children



Devyn Alexa Levin & Jessica Taylor Levin

Daughters of Stacy & Andy Levin

Sisters of Madeline

Granddaughters of Sam & Susan z"l Asbell and Bob & Anita Levin

Mitzvah Project: Collected Legos for the Boys and Girls Club of Camden County & donations to JFCS



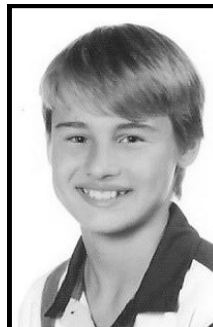
Andrew Henry Lowenberger

Son of Ellen & Michael Lowenberger

Brother of Mara

Grandson of Ilene Berman, Ellie Bloom, Maxiene Hargus, and Mark & Pat Lowenberger

Mitzvah Project: Collected & donated Legos to kids in need or special needs programs



Danya Weinstock

Son of Mitchell & Tatiana Weinstock

Brother of Vanya

Mitzvah Project: Helping the synagogue make sandwiches for the homeless at Thanksgiving and visiting the Elderly

Our Shabbat Kiddush is a wonderful way to celebrate your Simcha with our Beth El community!

- * Birth/Baby Naming * Wedding/Auf Ruf * Milestone Birthday * Anniversary *
- * Graduation * Bar or Bat Mitzvah Anniversary * Other Special Occasion *

Available upon request

To coordinate your event, please contact Tamar Barkan at 856-675-1166 ext 418 or tbarkan@bethelsnj.org



“אני ואתה נשנה את העולם”
“ME AND YOU, WE WILL CHANGE THE WORLD”

This is the opening of a popular Israeli song. This is also what our children and families of the ECC do every week and on different occasions. They change the world...our children bring tzedakah money every Friday and place it in their class tzedakah box during their Shabbat celebration. With the money collected we identify different organizations and we use the money to buy things which the children later either assemble or create to gift those organizations.

In November, we collected over 200 new and gently used shoes to send the children in the Abuyadaya community in Uganda. During the visit of their Rabbi Sizomu and his friend Rachman Nachman we learned that they will be opening a Mother and Child Center in their community and they plan to educate children to wear shoes for better hygiene and healthier walking habits. We thank Beth El Men’s Club and Sisterhood for assisting with the shipping of the shoes to Uganda.

In preparation for Chanukah we selected the Voorhees Animal Shelter to be one of our tzedakah projects destination. The children made toys for the cats in the shelter: they made balls filled with catnip out of socks and scratching pads for the cats’ cages. For the dogs, we purchased a bunch of treats and bags of food.

We also selected a school in a poor neighborhood where children have no winter gear and we packaged hats, gloves, mittens and socks that we purchased for the children.

The song continues...

“אני ואתה אז יבואו גם כולם”

“I AND YOU AND THEN EVERYONE WILL FOLLOW...”

I sure hope so....



This space is not big enough to write everything the Beth El Early Childhood has to offer - call 856-675-1166 to schedule a visit!

- Flexible – A la carte child care options
- Free Membership to Synagogue
- After school activities to include Suzuki Violin, Sports, Dance
- State of the Art room for variety of art exploration
- Special Needs coordinator on staff
- Sensory Room to assist with additional child development activities and guidance
- Full Day KG and KG enrichment classes
- Extracurricular activities taught by experts
- Experienced and tenured teachers
- Fun and interactive Friday morning – Shabbat program
- Children bake Challah every Friday

REGISTRATION STARTING JANUARY 2017!

TURN SATURDAY INTO SHABBAT

One of my favorite Shabbat memories took place one summer in Syracuse NY, after my siblings and I returned from our summer programs and before we returned to college. My father, a Rabbi, was on vacation and Friday evening after dinner he told us to sleep in and meet out by the pool in our best beachwear for Shabbat services. The next morning we all met by the pool with three friends of the family to help make up the minyan. The day before, my father brought home a Torah and as we gathered around the pool we participated in one of the most meaningful Shabbat morning services I have ever experienced. The singing, the sun, and the clear blue sky created a sacred moment that I will cherish for the rest of my life. It was at that moment I realized how one can easily turn a beautiful Saturday morning into a Shabbat experience. Rabbi Abraham Joshua Heschel, one of the greatest Jewish theologians of our time, taught that the meaning of Shabbat is to celebrate time rather than space.

We at Beth El strive to provide a Shabbat experience for children of all ages. Every Saturday morning for our youngest children we have our Shabbat Spot Program geared towards children under the age of 5. Children and parents are welcome to come socialize, play, partake in a Shabbat related craft, and join in a Shabbat service led by Susan Yefet and our clergy on a weekly basis. For our children in grades K-6 we offer weekly an exciting Junior Congregation service led by Chai Respes and Larry Abrams. Students of all ages are encouraged to lead the tefillot and read from the Torah. And if you love candy, then make sure you don't miss out!

This year, we introduced a new program called the, "Shabbat Shalom Club." The Shabbat Shalom Club is an incentive program offered to all of our Congregation Beth El children from grades Kindergarten-sixth grade. Children who attend a total of 10 Shabbat or holiday services will be honored at the end of the year for their dedicated attendance. When a child attends five services, they become members of the Shabbat Shalom Club. Once your child attends their first service of the year, they receive a star with their name on it to put on the Shabbat Shalom Club bulletin board. Each time your child attends a service, he or she receives a star to acknowledge his or her attendance. There is still time to join the club! On Sunday, January 8 all children who have attended 5 or more services by January 1 will be invited to a party from 11:30am-12:00pm. Please look in your email for the personal invitation.

Shabbat arrives every Friday night. It can come and go without us even realizing it. It is up to us to be within

Shabbat rather than for Shabbat to be within us. Come spend Shabbat with your Congregation Beth El family and delight your soul with pleasure.

Save the Date!

Sunday, January 1 - No School
Tuesday, January 3 - School Resumes
Sunday, January 8 - Shabbat Shalom Club Party for those students who have attended 5 or more Shabbat services
Sunday, January 15 - No School
Sunday, January 22 - Grandparents Day and Zimriyah
Saturday, January 28 - Bet Havdalah B'yachad
Sunday, January 29 - Gimmel B'yachad, No Bet Class
Sunday, February 12 - Hey B'yachad (S/T)
Sunday, February 19 - No School
Sunday, February 26 - Hey B'yachad (S/W)

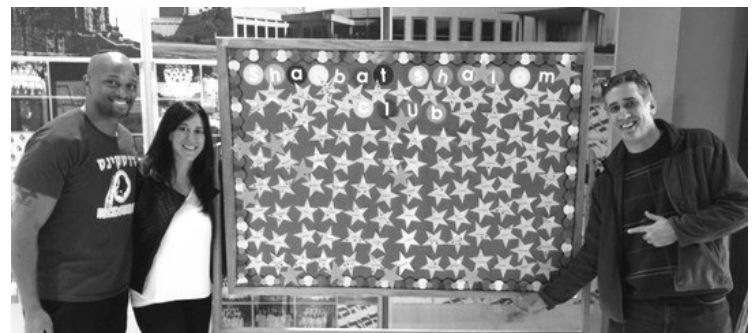
Shabbat Programming

January 7-Daled Shabbat
January 21-Gimmel Shabbat
January 28-Vav Shabbat
February 4-Hey Shabbat
February 11-Bet Shabbat
February 24-Daled Shabbat

If your child would like to read Torah on Shabbat, please email Rabbi Marshall at nmarshall@bethelsnj.org

Yasher Koach to our recent Torah Readers:

Eli Aumiller	Talia Miller
Jacob Berg	Avery Mitzner
Adam Blumenthal	Evan Orei
Benji Derman	Hayden Rappaport
Ari Feinstein	Aaron Reichenberg
Stacey Gruber	Evan Reichenberg
Alex Glauser	Miranda Rosenberg
Kyle Goldstein	Sophia Rosof
James Harris	Sean Shapiro
Samantha Hassman	Mikayla Shenker
Isabella Laster	Raquel Sloves
Adam Leibowitz	Brenna Spector
Susannah Lieberman	Vanya Weinstock
Isaac Linden	Jacob Yehudah



January 2017
Tevet—Shevat 5777

SHACHARIT (Morning) SERVICES:

Monday & Thursday — 7:15AM
 Tuesday, Wednesday & Friday — 7:30AM
 Saturday & Sunday — 9:00 AM

NOTES & EXCEPTIONS

Sunday, January 1: Chanukah — 8:30 AM
 Sunday, January 8: Fast of 10th of Tevet — 9:00 AM
 Monday, January 16: Martin Luther King Jr. — 8:30AM
 Saturday, January 28: Rosh Chodesh Shevat — 9:00AM

Candle Lighting

Mincha (Afternoon) Ma'ariv (Evening) Services

	Sunday, January 1—Thursday, January 5	4:35PM
4:33PM	Friday, January 6	4:35PM
	Saturday, January 7	4:35PM
	Sunday, January 8—Thursday, January 12	4:50PM
4:40PM	Friday, January 13	4:40PM
	Saturday, January 14	4:40PM
	Sunday, January 15—Thursday, January 19	4:55PM
4:47PM	Friday, January 20	4:50PM
	Saturday, January 21	4:50PM
	Sunday, January 22—Thursday, January 26	5:10PM
4:56PM	Friday, January 27	4:30PM
	LETS DO SHABBAT Services	6:00PM
	Saturday, January 28	5:00PM
	Sunday, January 29—Thursday, February 2	5:10PM

February 2017
Shevat—Adar 5777

SHACHARIT (Morning) SERVICES

Monday & Thursday 7:15AM
 Tuesday, Wednesday & Friday 7:30AM
 Saturday & Sunday 9:00 AM

NOTES & EXCEPTIONS

Monday, February 20: Presidents' Day — 8:30AM
 Sunday, February 26 : Rosh Chodesh Adar — 8:30AM
 Monday, February 27: Rosh Chodesh Adar — 7:15AM

Candle Lighting

Mincha (Afternoon) Ma'ariv (Evening) Services

	Sunday, January 29—Thursday , February 2	5:10PM
5:04PM	Friday, February 3	5:05PM
	Saturday, February 4	5:05PM
	Sunday, February 5—Thursday, February 9	5:20PM
5:12PM	Friday, February 10	4:30PM
	LETS DO SHABBAT Services	6:00PM
	Saturday, February 11	5:15PM
	Sunday, February 12—Thursday, February 16	5:30PM
5:21PM	Friday, February 17	5:25PM
	Saturday, February 18	5:25PM
	Sunday, February 19—Thursday, February 23	5:40PM
5:29PM	Friday, February 24	5:30PM
	Saturday, February 25	5:30PM
	Sunday, February 26—Thursday , March 2	5:45PM

MEMBER SPOTLIGHT

Lynn Goldman Paul

As a Beth EI member for the past 60 years, a daughter of a past-president, a past-president herself, and a member of countless committees, Lynn Goldman Paul is no stranger to giving her time and energy to others. But when Hurricane Katrina, one of the deadliest hurricanes in US history, hit, she wanted to do more. Lynn called the American Red Cross and asked how she could help, and 11 years later, is still helping.

Lynn credits Hurricane Katrina and her time spent volunteering there with changing her life, choking up as she says, "It changes you. There are so many good people out there; some of the most resilient, wonderful people I've ever met in my life, and that was the worst disaster I've ever seen. They are so grateful for a hot meal and water. One gentleman told me, 'you gave of your heart so other hearts could feel better.' There is no better feeling."

As a Disaster Responder, Lynn is only given 24 hours to get to the disaster site and don her red volunteer vest. Then she works long, exhausting days wherever she is needed – in mobile feeding, bulk distribution, or as a shelter supervisor. The work isn't for everyone; it can be filthy, arduous, and emotionally draining. But Lynn firmly believes there is nothing better, "At the end of the day, if you are stinky, tired, and dirty, you had a really good day."

Lynn's incredible charity has had a positive impact on her friends, too. Inspired by Lynn, Debbie Morowitz, another Beth EI member, underwent the training necessary to be a Red Cross volunteer, and joined Lynn in Georgia this past October after Hurricane Matthew swept the state. Together, they went door-to-door with a van full of supplies, giving out everything from snacks to cleaning supplies to water. Debbie says, "The feeling of reaching out and helping cannot be put into words."

Debbie praises her friend, "Lynn has a passion for helping anyone." Lynn is a part of the Jewish hospice advisory committee from Samaritan and she participates in JFCS food pantry. In addition, she is also Vice Chair and part of the Executive Committee from American Red Cross, a board member of Boys and Girls Clubs of Camden and she volunteers every day serving lunch at the Katz Dalsey Charter school in Camden.

If you too are inspired by Lynn, you can learn more about volunteering locally with the American Red Cross by calling (856) 365-7100 ext 321. There is always something for everyone to do!



If you know of a member who should be spotlighted in the Beth EI News, please email Davida Chornock at dchornock@bethelsnj.org with their name and reason for nomination.

FACES OF BETH EL



A big thank you everyone who spent the morning helping others with our 4th Annual Community Mitzvah Day!



Over 450 people danced, sang, and enjoyed Dueling Pianos!

Men's Club



Larry Hanover, President
hanovers4@comcast.net

Men's Club had an active slate of events as 2016 wound down. I am thrilled with the attendance and individuals coming up to say how much they enjoy our speakers and the camaraderie. Membership is spiking, too!

Torah on Tap is showing renewed vigor. We had our first in November at our regular Tir Na Nog lair (standing room only!) and a special "Scotch and Latkas" edition in December led by Rabbi Krupnick at shul. We also had two editions of our Men's Club/Eagles Party initiative – one hosted by Hazzan Alisa Pomerantz-Boro and Stephen Boro and a parent-child event in partnership with Religious School.

Partnering is a key theme for us this year. Our December breakfast about "Keeping Dialogue Alive with the Muslim Community" was co-hosted with Sisterhood in collaboration with the JCRC and the Jewish Catholic Muslim Dialogue. We were part of Community Mitzvah Day as Larry Abrams had dads and kids sorting children's books for donation to schools in need.

Looking ahead

Torah on Tap, Wednesday, January 18 and February 15: Rabbi Green speaks on The G-d We Believe In vs. the G-d We Do (January) and Bible Stories You Don't Know (February).

Ari Sacher, Scholar in Residence, Sunday, January 26: Men's Club co-sponsors a breakfast for Sacher, senior engineer responsible for the development of Israeli weapons and military technology.

Phil Podell Memorial World Wide Wrap, Sunday, February 5: Put on your tefillin in brother/sisterhood as part of our Breakfast Series.

"Volunteering for the Israeli Army," Saturday night, February 25: Larry Abrams is at the Katz JCC representing Men's Club at "A Night of Jewish Learning and Inspiration." He discusses a recent three-week experience on two Israeli army bases under "Volunteers for Israel," performing tank maintenance.

Sisterhood



Renee Kessler, President
rbkess@comcast.net

Please join your BE Sisters for these upcoming events:

Monday, January 9 at 7:00 pm - Game Night 2017! A great way to start your week and the new year. You won't want to miss this fun filled night. \$5 for members; \$10 for non-members payable at the door

Monday, January 16 - MLK Day of Service. Watch for information on daytime service activities for the family. Interested in helping coordinate events, contact Rachel Miller at RBKM78@gmail.com

Thursday, January 19 & February 16 at 7:00 pm - Challah baking in the Beth El kitchen. Join us for this popular monthly event. RSVP required. January link: <http://www.signupgenius.com/go/5080A4EA8AA22AB9-challah1>. The February link will be in the Buzz.

Monday, February 26 - Join Hazzan and Charlene as we welcome the month of Adar with music, activities, fun and friendship.

Ongoing:

- DROP IN MAH JONG IS BACK starting on Sunday, January 8
- Looking for a spiritual start to your day? Join our Wednesday morning minyan followed by interesting discussion and breakfast
- Judaically Yours is looking for women to staff the shop. Contact Linda Lazarow - llazarow@msn.com

SAVE THE DATE:

Purim is March 12. Look for information about Shalach Manot in your email inbox in January

Saturday, March 4 - Sisterhood Shabbat. Sisterhood members are invited to take part in the service. Contact Risa Wittman if you'd like a role. pd_wittman@yahoo.com

Sunday, March 26 - PARTY SHOWCASE 2017! We are looking for vendors and volunteers. Contact Sharon Mindel for more information at samindel@yahoo.com

Plan to join us in 2017 and experience the power of Sisterhood!

Young Families' Group



Mira Aumiller, President
msaumiller@yahoo.com

New this year- YFG is offering some classes for US, to learn in a casual and comfortable setting from Rabbi Green. Join us for our two sessions on Sunday, February 5 and Sunday, February 12

where we will have discussions on topics such as Jewish beliefs of what happens after death and the Arab -Israeli conflict. Classes will run at 11:00 am, convenient for pick up at religious school. Stay tuned for location information in our mailings and Facebook.

Make sure you are registered for Quizzo 2017! Our committee has been hard at work to make it another huge success. Remember, this is an event geared to all the young adults and parents of Beth El's religious school and the ECC but you do not have to be a member to attend! This is our fun night together- don't miss it. Go for the title of smartest Beth El-er of random facts! Catered food, open bar, prizes, raffle baskets, silent auction, corn hole games- there is seriously something for everyone. January 28 7:30- register at <https://bethelsnj.wufoo.com/forms/yfg-quizzo/> This event, like last year, also serves to fundraise for both YFG and the Early Childhood Center. #BEQuizzo17

It is not too early to consider joining us for our next Young Families Group Retreat. We are going to a new location at the base of the Appalachian Mountains in PA called the Capital Retreat Center. Our retreats are a great way to unplug and enjoy a meaningful Shabbat weekend with other Beth El families. They provide programming for all of us as a group, as well as adult only programming (babysitters included)! This will be the third one my family is going on and back by popular demand (especially from my own four kids who loved them)! There will be a limit to the number of families who can attend so don't hesitate to email me for details if you are interested (msaumiller@yahoo.com)- we are filling up quickly.

Habonim



Judy Simkin, President
lensim@comcast.net

Habonim plans activities and trips during the course of the year. Our last trip was to the Holocaust Museum in Washington DC and it was a moving and inspirational trip. It is indeed our obligation to

NEVER FORGET.

On Wednesday, December 28 , the fifth night of Chanukah, we had our second annual Chanukah party. The festivities included lighting our menorahs, eating latkes, and participating in a sing-a-long with Hazzan Pomerantz-Boro. It was a beautiful sight to see all the lights burning together. The evening was in memory of our beloved Margie Blum who was such an important part of Habonim.

I would like to take this time to wish all of you a very Happy Healthy New Year and we look forward for all of you joining us in our future events

For more information, please contact Judy Simkin at 856-829-2651 or lensim@comcast.net

Social Action MLK Day of Service

Monday, January 16
Mitzvah Activities for all ages
10am-12pm
More information coming soon!

Do you have a special occasion you wish to commemorate or honor?

Consider sponsoring the Beth El News.
For \$180, your name will appear on the front page with your special dedication.

Sponsorships are limited; contact Davida Chornock at dchornock@bethelsnj.org today!



Memorial Chapels, Inc.

Bernard A. Platt, Director NJ Lic. No. 3480
Harry A. Platt, Manager NJ Lic. No. 3824
Alison Platt, Director NJ Lic. No. 4542

2001 Berlin Road Cherry Hill, NJ 08003-3794
856.428.9442 800.262.9442



BELL LIBRARY NEWS—AMY KAPLAN, CONGREGATION LIBRARIAN

Cookbooks? We have them. Brand-new novels by authors you love? We have them. Hundreds of picture books for young children? Yes, we have those, too. And audiobooks, DVDs, books about Jewish history and culture...yes, we have all of them. But given the ever-increasing cost of books, we need your support now more than ever. We are just about done with our annual Jewish Book Month fundraiser, but are extending the deadline two weeks to January 16.

This means you can dedicate books at special, reduced rates.

Usually a book dedication is \$25.00, but for Jewish Book Month, we offer dedications at **\$20.00, or 2 for \$36.00**. This is a great way to say “thank you,” “mazal tov,” and the like, or to mark a yahrzeit. We acknowledge all dedications personally with a letter to the honoree, and we put an inscribed bookplate in a library book.

Please send us your donations and help the library grow! Here is a list of our donors to date:

Gloria and Ira Back	Phyllis B. Hecsh
Donna and Richard Bell	Sharla and Mort Kanovsky
Marion Cohen	Harriet Schulman
Rochelle S. Cohen	Lina Shane
Marsha Z. Dollinger	Lewis Silverman
Marsha Goodman	Laura Yehuda

Two from our “New Novels” shelf – not to be missed:

Critics are raving about Jonathan Safran Foer’s new novel, *Here I Am*. Foer delivers stunning emotional punches as he dissects a troubled marriage. The plot includes a devastating earthquake in the Middle East that escalates conflict in the region. Everything is illuminated catapulted Foer to fame, and *Here I Am* shows that Foer continues to be a major voice in Jewish American literature.

Jonathan Rabb’s new novel, *Among the Living*, is the story of Yitzhak Goldah, a Holocaust survivor who moves to Savannah, Georgia after the War. He lives with his cousins, traditional Jews who are his only remaining relatives. Yitzhak is perplexed by the division between Reform and Conservative Jews, and the injustices of the Jim Crow South. He falls in love with a reform Jew, and then a woman from Yitzhak’s past reappears. This is a love story, a period piece, and an engaging character study.

The **Library’s Short Story Discussion Group** is thriving! Come join us for friendly, stimulating conversation. We will meet on **Thursday, January 26 and Thursday, February 23**, in the Conference Room, 1:30 – 3:00 PM. For more information, please call the Library.

SINGLES SHABBAT

Meet people of all ages in a warm environment!

Shabbat service is FREE and open to ALL! Held every third Friday of the month at 8 PM in the small Chapel. Oneg following services.

Join us!

January 20 ♥ February 17

Contact Norma Kamis:
(856) 662-7916 or normatrack@verizon.net

Judaically Yours

Sunday: 9am-12noon	Wednesday: 9am-5pm
Monday: Closed	Thursday: 9am-5pm
Tuesday: 9am-5pm and 7-8pm	Friday: 10am-12noon
	Saturday: Closed

ATTENTION COLLEGE BOUND STUDENTS & PARENTS!

**BETH EL’S COLLEGE CONNECTION COMMITTEE IS
CONTINUING TO ACCEPT ADDRESSES FOR THE
2016-17 SCHOOL YEAR****

Help us keep our Beth El college students connected to their shul and Jewish community. We provide holiday packages and Beth El news updates throughout the school year. If you would like your student to participate in this **free** program, please submit the following to **Ann Miller at
ALM4SP@aol.com or (856) 428-5145:**

Student Name	School Address
Student’s e-mail address	Name of School
Parent Name and Phone #	Class Year

**INFORMATION MUST BE SUBMITTED BY
FRIDAY, FEBRUARY 17, 2017
TO RECEIVE THE THIRD (PURIM) PACKAGE**

****STUDENTS STUDYING ABROAD DURING THE
SPRING SEMESTER ARE ASKED TO CONTACT ANN
MILLER (see above)**

For more information call Gloria Back (856) 428-6368

****ALL ADDRESSES MUST BE UPDATED ANNUALLY.
PLEASE SUBMIT STUDENT’S ADDRESS EVEN IF
PREVIOUSLY REGISTERED.**

Sponsored by the David Back College Connection Fund
Anyone wishing to make a donation to the College
Connection Fund may do so by calling the office at
856-675-1166 x 139

CARING ACTS OF TZEDAKAH (AS OF DECEMBER 15)

SUSAN ASBELL RITUAL FUND

DONOR

Andy Levin

DONOR

Debbie Grossman
Joan Langer

Lisa & Scott Stegall

DONOR

Joan Feinberg

Beverly Kellman

Lisa & Scott Stegall

IN APPRECIATION OF

Aliyah recieved

IN HONOR OF

Marriage of David Feinberg
B'nai Mitzvah of Devyn &
Jessica Levin
Bat Mitzvah of Julia Aronberg

IN MEMORY OF

Gerri Ostrov, Livia Salomon,
Yahrzeit of Judge Norman
Heine
Gerri Ostrov, Irwin Manheim,
Micki Goldberg
Gerri Ostrov

DAVID BACK COLLEGE CONNECTION FUND

DONOR

Marsha Goodman

DONOR

Gloria & Ira Back

Elise & Steven Lieberson
Myrna & Jeff Sorokin

DONOR

Gloria & Ira Back
Yvonne & Sam Brand
Amy & Eric Clayman

Natalie Clayman
Marion Cohen
Sylvia & Jack Moldoff

IN APPRECIATION OF

College Connection packages

IN HONOR OF

Birth of granddaughter to
Barbara & Eric Frantz, Birth of
granddaughter to Marcia &
Bruce Tomar
Amy & Eric Clayman
Harriet Schulman JFund
Chairman

IN MEMORY OF

Joel Chackman
Gerri Ostrov
Micki Goldberg, Livia
Salomon
Micki Goldberg
Yahrzeit of Reba Schwartz
Gerri Ostrov

BELL LIBRARY FUND

DONOR

Donna & Richard Bell
Lynne Gradinger Besen
Helene & Saul Bresalier
Neal & Fran Cupersmith
Barbara & Henry Friedman
Beth & Harvey Jacob
Rita & Alan Kagan
Gladys & Steven Krulik
Judy & Donald Love

Mindie, Larry & Brett Rosen
Gerri & Joachim Rudoler

IN MEMORY OF

Gerri Ostrov, Livia Salomon
Livia Salomon
Dr. Herbert Greenbaum
Livia Salomon
Morty Mann
Livia Salomon
Morty Mann
Morty Mann
Bernice Gothard, Gerri
Ostrov, Yahrzeits of Sylvia
Fay Rosen, Bette Love Cohen
Judie Kratchman
Morty Mann

MARGIE BLUM CHESED FUND

DONOR

Collik Family

IN HONOR OF

Anniversary of Carol & Joel
Fleisher, 50th wedding
anniversary of Rita & Alan
Kagan, 26th wedding
anniversary of Lauren & Jon
Soll

DONOR

Carol & Joel Fleisher
Sharla & Mort Kanovsky

DONOR

Marcia & Jeffrey Albom
Barbara Braude
Carol & Joel Fleisher

Harriet Goodstein & Family
Sharla & Mort Kanovsky
Beverly Kellman
Janet & Robert Kaufman
Moldoff Family
Lina Shane
Judy & Len Simkin
Linda Weiss & Josh Matusow

DONOR

Sharon & Herb Deutsch

SYLVIA BOORY FRAGILE X RESEARCH FUND

**The following contributions were made in memory of
Joan Belfer:**

The Bell Family
Judy Charny
Leila & Ian Joffe

Pauline Landau
Geri & Joachim Rudoler
Michele & Scott Warren

DONOR

Geri & Joachim Rudoler
Lauren & Jon Soll

IN MEMORY OF

Robert Boory
Livia Salomon

DR. HARRIS & ARLENE COLTON BETH EL JR. COLLEGE SCHOLARSHIP FUND

DONOR

Arlene & Harris Colton

IN MEMORY OF

Micki Goldberg

EARLY CHILDHOOD CENTER FUND

DONOR

Susan & Sid Greenwald

IN APPRECIATION OF

Beth El ECC

DONOR

Stephanie & Fred Toettcher
& Family

IN MEMORY OF

Gerri Ostrov

ELLIS FAMILY FUND

DONOR

Barbara & Martin Brodack
Sharon & Herb Deutsch
Carol & Joel Fleisher

IN HONOR OF

Selma Ellis' new home
Selma Ellis' new home
Selma Ellis' new home

FAMILIES IN NEED FUND

DONOR

Jeffrey Robinson & Kathy,
Barry & Jayne Bernsten
Jackie & Bill Pearson
Elaine Waxman

IN MEMORY OF

Gerri Ostrov
Reba Stillman
Yahrzeit of Lillian Waxman

CARING ACTS OF TZEDAKAH

ARTHUR & BETTE GOLDMAN FUND

DONOR

Lynn & Steve Paul
Cookie & Allan Weinberg

IN HONOR OF

Bar Mitzvah of Zachary Stein
Bat Mitzvah of Lynn & Steve Paul's granddaughter
Madison

DONOR

Phyllis Pearl
Jackie & Bill Pearson

IN MEMORY OF

Gail Kuletsky
Mervyn Dezenhall

ETHEL & REUVEN GOLDMAN FUND

DONOR

Sydney & Carl Tinkelman

IN MEMORY OF

Gerri Ostrov

RABBI ANDY GREEN SPECIAL FUND

DONOR

Jackie & Richard Bernard

IN APPRECIATION OF

Perry Bernard reading Torah on Yom Kippur

Collik Family
Carol & Joel Fleisher
Karen & David Schlessel
Andrea & Michael Stein

Rabbi Andy Green
Aliyah honor
Rabbi Andy Green
Rabbi Andy Green

DONOR

Carol & Joel Fleisher
Murray Matez

IN MEMORY OF

Yahrzeit of Mildred Fleisher
Yahrzeit of Irene Matez

DR. HARRY W. HALTZMAN MEMORIAL FUND

DONOR

Rita Schuldiner
Carole Haltzman

IN MEMORY OF

Robert Rothman
Morty Mann, Yahrzeit of
Nathaniel Haltzman
Robert Rothman

Mae Spitzer

HAZZAN ALISA POMERANTZ-BORO SPECIAL FUND

DONOR

Collik Family
Lori Kagan
Rita & Alan Kagan
Sandra & Arnold Kaminer
Ruth & Larry Katz

IN APPRECIATION OF

Hazzan Alisa Pomerantz-Boro
Hazzan Alisa Pomerantz-Boro
Hazzan Alisa Pomerantz Boro
Hazzan Alisa Pomerantz-Boro
Ray Katz, Sheila & Sam Mandel, Burt Nussbaum
Hazzan Alisa Pomerantz Boro

Karen & David Schlessel

DONOR

Jackie & Richard Bernard

IN HONOR OF

Perry Bernard reading Torah on Yom Kippur
Hazzan Alisa Pomerantz-Boro
Hazzan Alisa Pomerantz-Boro
50th wedding anniversary of Ruth & Larry Katz
50th wedding anniversary of Ruth & Larry Katz
Naming of granddaughter of Rita & Alan Kagan

Rachel & Norm Green
Judie & Steven Kuhl
Tula & Scott Kurtz

Sheila & Samuel Mandel

Shirley Mangel

The following contributions were made in memory of Morty Mann:

Muriel & Joel Asnen
Carol & Moe Berman
Allan Cetron
Ruth & Larry Katz

Karen, David, Marc & Zoe Schlessel
Marcia Spanier
Bobbi & Steve Wenick

DONOR

Susan & Paul Cherkas
Myra & David Gutin
Ruth & Larry Katz
Bobbi & Steve Wenick

ALLAN E. HECSEH FUND

DONOR

Phyllis Hecsh

Lorraine Leff
Marcella Supnick

KIDDUSH FUND

DONOR

Mimi Brodtkin

DONOR

Shirley Werner

DONOR

Julie & Jason Whitney

RABBI AARON KRUPNICK SPECIAL FUND

The following contributions were made in appreciation of Rabbi Aaron Krupnick:

Collik Family
Sandra & Arnold Kaminer
Ellen Marks' parents

IN MEMORY OF

Gerri Ostrov
Gerri Ostrov
Gerri Ostrov, Livia Salomon
Gerri Ostrov

IN MEMORY OF

Gerri Ostrov, Yahrzeit of Gwen Berney, Yahrzeit of Harold Berney
Yahrzeit of Allan E. Hecsh
Gerri Ostrov

IN APPRECIATION OF

The Honor of having an aliyah

IN HONOR OF

Birth of 5th great grandchild to Shirley Werner

IN MEMORY OF

Livia Salomon

DONOR

Jodi & Ed Abrams
Lois Asbell

Sima & Jonathan Bennett
Dianne Lazer & Brian Crimmins
Ron Lieberman

DONOR

Marsha Dollinger

Stacy & Keith Dunoff

Joyce & Dick Feder
Cynthia & Marc Kahn
Sandra & Arnold Kaminer
Sharla & Mort Kanovsky

Marcia & Nate Kleeman

Judie & Steven Kuhl
Barbara & Stan Rekant
Carolyn & Joe Rosen

Joan Shapiro

IN APPRECIATION OF

Opening ark on Yom Kippur
Aliyot Rosh Hashanah & Sukkot
Yom Kippur Aliyah
Receiving an Aliyah
Family aliyah received for Rosh Hashanah

IN HONOR OF

Helene Krupnick's Educational achievement, Bat Mitzvah of Ilana Stofman
Birth of grandson to Holly & Jerry Moradi
Bar Mitzvah of Zachary Stein
Helene Krupnick
1st birthday of Mia Joy Katz
Marriage of Abbey & Lisa Spector
Bar Mitzvah of Mitchell Krupnick
Rabbi Aaron Krupnick
Bar Mitzvah of Ethan Farber
Special birthday of Rosalie Rosen
80th birthday of Arnold Levinson

CARING ACTS OF TZEDAKAH

The following contributions were made in memory of Gerri Ostrov:

Edward Adleman & Janice Smith	Patrice, Eddie & Shawn Kurland
Ruth & Richard Bogutz	Jackie & Bill Pearson
Sharon & Bill Bronstein & Family	Geri & Joachim Rudoler
Stephanie & Chuck Cahn	Joy & Gordon Schaefer & Jill & Josh Kroll
Marsha Dollinger	Lois Schatz
Anita Farber	Arlene & Jerry Schwartz
Bonnie & David Gold	Bonnie Schwartz
Lil & Doc Joe Hassman	Sharon & Arnold Staloff
Judith Hepps	Wendy & Harvey Voron
Debbie & Ed Hochberg	Shirley White
	Christine & Patrick Zubrow

DONOR

Lois Asbell
Beth El Mens Club
Jackie, Richard, Ian & Perry Bernard
Helene & Alan Blumenfeld
Lisa & Stephen Brodack
Barbara & Martin Brodack
Sharon & Bill Bronstein

Stephanie & Chuck Cahn
Charny Family
Linda & Paul Chase
Marion Cohen
Anita Farber
Florence Fridrich
Friends of Burton Specter
Eleanor & Phil Goodman

Phil Goodman

Charlotte & Murray Greenberg
Barbara & Mark Jacobs

Sharla & Mort Kanovsky
Linda & Mort Kraemer
Robin Sue & Bill Landsburg
Joan Langer
Donald Levenson
Ellen & Jay Levy
Randee, Alan & Nathaniel
Moldoff/ Edith Bristol
Jackie & Bill Pearson
Arlene & Edward Plasky
Judy Pokrass

Gail & Marty Raffner

Ronni & Mark Reiner

Sharon & Alan Richter
Zev Rose & Family

IN MEMORY OF

Yahrzeit of Joseph Asbell
Morty Mann
Yahrzeit of Barry Bernard

Yahrzeit of Harold Supon
Yahrzeit of Pola Soldyn
Bernice Gothard
Yahrzeit of Dr. Albert Order,
Yahrzeit of Fania Rotman
Burton Specter
Livia Salomon
Isadore Altman
Yahrzeit of Charles Cohen
Yahrzeit of Isaac Szuchman
Yahrzeit of Martin Kravitt
Burton Specter
Manuel Respes

Yahrzeit of Max Goodman,
Yahrzeit of Hyman Klear
Micki Goldberg
Yahrzeits of Albert Jacobs,
Leon Lustig
Livia Salomon, Allen Specter
Yahrzeit of Ed Kraemer
Micki Goldberg
Harold Baum
Yahrzeit of Sandy Levenson
Yahrzeit of Morris Levy
Paul Sherman

Lenny Berger
Yahrzeits of loved ones
Yahrzeit of Pearl Berman,
Yahrzeit of Jennie Gordon,
Yahrzeit of Sylvia Berman
Morris Raffner, Celia Raffner,
George Miller, Bernice Miller,
Marilyn Raffner, Kay Wetzstein
Elsie Reiner, Yahrzeits of
Sadie Reiner, Morris Dickstein
Bernice Gothard
Mervyn Dezenhall

Eva & Marvin Schlanger
Yahrzeit of Philip Listman,
Yahrzeit of Edith Listman
Bernice Gothard
Isadore Altman
Blanche Schwartz
Livia Salomon
Isadore Altman
Yahrzeit of Ida Bree
Morty Mann

DAVID LANDSBURG SELICHOT FUND

DONOR

Robin Sue & Bill Landsburg

IN MEMORY OF

Gerri Ostrov, Livia Salomon,
Paul Sherman

LUKOFF CULTURAL FORUM FUND

DONOR

Marsha Dollinger

Nikki & Len Feldman

Judy & Donald Love

DONOR

Marcy Sanders

Natalie & Warren Werbit

BETH EL RELIGIOUS SCHOOL FUND

DONOR

Rachael & Jeffrey Donsky

DONOR

Susan Krantz
Stephanie & Michael Ritigstein
& Family
Carol & Ed Rosof

Shera & Stuart Shalit
Bobbi & Steve Wenick

DONOR

Liz Baim & Family
Nancy & John Kravitz
Shirley Mangel
Jodi & Karl Schwartzl
Beverly Segal
Elisa & Rich Weitzman
& Family

IN HONOR OF

Marriage of David Feinberg,
Marcy Sanders recipient of the
2016 Kipnis Wilson Award
Wedding of Jason Kessler, Bat
Mitzvah of Nadine Litvak,
Lauren & Jon Soll wedding
anniversary
Marcy Sanders'
granddaughter's engagement

IN MEMORY OF

Gerri Ostrov, Yahrzeit of Hal
Sanders
Bernice Gothard

IN APPRECIATION OF

Beth El

IN HONOR OF

Bat Mitzvah of Melissa Shapiro
Bar Mitzvah of Zachary Stein

Bat Mitzvah of Eva,
granddaughter of Dr. & Mrs.
Alan Raskan
Education
Amy & Eric Clayman recipients
of ZOA Award

IN MEMORY OF

Gerri Ostrov
Gerri Ostrov
Livia Salomon
Gerri Ostrov
Gerri Ostrov
Claire Budner

CARING ACTS OF TZEDAKAH

ALAN RICHMAN CHILDRENS' RECREATION FUND

DONOR

Lauren & Jon Soll

IN HONOR OF

Bat Mitzvah of Melissa Shapiro, Bat Mitzvah of Ilana Stofman

DONOR

Linda & Joel Appel
Zev Rose
Lauren & Jon Soll

IN MEMORY OF

Joan Belfer
Joan Belfer
Joan Belfer

NAURICE & INGRID ROSEN FUND FOR SPECIAL ED

DONOR

Stephen & Mary Jo Rosen

IN MEMORY OF

Morty Mann

SIM SHALOM SIDTUR FUND

DONOR

AIPAC Philadelphia Office
Erica Ritter

IN MEMORY OF

Livia Salomon
Yahrzeit of Joyce Ritter

ANDREW & ERIC SUSSMAN SCHOLARSHIP FUND

DONOR

Linda & Paul Chase
Phyllis & Art Goldstein
Amy & Danny Schwarz
Lauren & Jon Soll

IN HONOR OF

Bat Mitzvah of Ilana Stofman
Bar Mitzvah of Zachary Stein
Bar Mitzvah of Noah Rose
Bar Mitzvah of Noah Rose

DONOR

Melissa Chase & Shari Sussman
Elaine & Bart Greenspan
Lil & Doc Joe Hassman
Barbara & Gary Kanalstein
Zev Rose
Shari Sussman & Melissa Chase

IN MEMORY OF

Carol Rose

Gerri Ostrov
Son/grandson of Carr Family
Gerri Ostrov
Gerri Ostrov
Stan Rovner

DONOR

Barbara & Gary Kanalstein

SPEEDY RECOVERY

Simmy Krassan

HARRY TAYLOR FUND

DONOR

Abby & Robert Belafsky
Debbie Grossman
Merle & Fred Linden

SPEEDY RECOVERY

Melody Taylor
Melody Taylor
Melody Taylor

CHARLES E. TROBMAN MEDICAL RESEARCH FUND

DONOR

Phyllis & Malcolm, Les & Mary & Charlie Trobman

IN APPRECIATION OF

Rabbi Aaron Krupnick

DONOR

Phyllis & Malcolm, Les & Mary Trobman
Phyllis & Malcolm Trobman

IN HONOR OF

Bar Mitzvah of grandson of Hon. & Mrs. Josh Friedman
Marvin Schlanger receiving the Medal of Excellence Award from the Rutgers U. School of Engineering

DONOR

Linda Markoff

IN MEMORY OF

David & Daniel Salsburg

USY/KADIMA FUND

DONOR

Anouk Backal

Anouk Backal

Rachel & Norm Green

DONOR

Burt & Diane Nussbaum

DONOR

Susan Diamond
Diane & Burt Nussbaum

VOORHEES PROJECT FUND

DONOR

Eva & Marvin Schlanger

DONOR

Sharon & Jay Ruder

Eva & Marvin Schlanger

WALKES CHAPEL FUND

DONOR

Barbara & Joe Walkes

JERRY YAFFA CRUETZFELDT JAKOB DISEASE RESEARCH FUND

DONOR

Shirley Mangel

DONOR

Nikki & Len Feldman
Carol & Joel Fleisher
Barbara & Henry Friedman
Jay Hammel
Janet & Robert Kaufman
Shirley Mangel
Shirley Yaffa

DONOR

Shirley Mangel

ARLENE ZELNICK SCHOLARSHIP FUND

DONOR

Paula Levine

IN APPRECIATION OF

Mirjam Peper having the opportunity to become a Bat Mitzvah with the best Rabbis and Hazzan and most caring members

Becoming a Bat Mitzvah
Ronit & Chris Boyd

IN HONOR OF

Naming of granddaughter of Rita & Alan Kagan

IN MEMORY OF

Livia Salomon
Yahrzeit of Fred Nussbaum, Sidney Nussbaum, Ruth Freiberg

IN APPRECIATION OF

High Holidays honors

IN MEMORY OF

Yahrzeit of Frieda Becker,
Yahrzeit of Isadore Ruder
Gerri Ostrov

IN MEMORY OF

Morty Mann

IN APPRECIATION OF

Lynne Besen, Bernie Yaffa

IN MEMORY OF

Livia Salomon
Yahrzeit of Mildred Fleisher
Bernice Gothard
Bernice Gothard
Bernice Gothard
Bernice Gothard, Joel Moss
Micki Goldberg, Livia Salomon

SPEEDY RECOVERY

Hazel Starr

IN HONOR OF

The Zelnicks' - a very special family

GIVING OPPORTUNITIES

THE TREE OF LIFE

LEAF: Purchasing a leaf on Beth El's Tree of Life, located inside the Shabbat and Holiday entrance to our building, is the perfect way to commemorate a significant life-cycle event.

Remember your wedding, birthday, anniversary, children's B'nai Mitzvah or other accomplishment by having a leaf custom engraved for \$275.

STONE: For a more significant addition to the Tree of Life, please consider purchasing a stone to adorn the bottom of the artwork. Each stone is custom engraved onto an all natural surface and promises to be a source of great family pride for years to come. The cost for each stone is \$550.

To order a leaf or stone, please call the Beth El office at 856-675-1166

Beth El is a Member of the "Jewish National Fund Affiliate Program"

There is **NO** easier way to earn money for Beth El & support Israel at the same time. **The procedure is as simple as a click!**

Go to our website: www.bethelsnj.org
Click on "support us"/"shop here" and then Jewish National Fund to make your purchase/donation.

Tell your friends, families & other congregants. Congregation Beth El will reap the rewards.

Plant Trees in Israel, Greeting Cards, Water Certificates, Honor Book Certificates, etc.

Every order placed, Beth El gets 20% commission.

For questions, call Debbie Drachman at 856 -719 -9485

SCRIP PROGRAM

Support Beth El by shopping at your favorite stores!

IT'S AS EASY AS 1,2,3:

1. Click on "Buy Scrip" under Quick links on www.bethelsnj.org
2. Place your order on the on-line form
3. Pay by phone or by check and pick up your order at Beth El

The Scrip program helps support educational programming for children and adults at Beth El

Take advantage of our new home delivery! (select neighborhoods)

Use scrip for Holiday Dinners!
Shoprite, Whole Foods, Kibitz Room, Acme.

Use scrip for Back to School Needs! Staples, CVS, Bed, Bath & Beyond, American Eagle, Macy's, Barnes & Noble

Congregation Beth El is an Amazon Affiliate

Purchases generate a minimum **4% or higher Rebate**

Click "Support us" on the *Beth El website*: <http://www.bethelsnj.org> and then click on Amazon. Entry to the Amazon site will follow automatically

Beth El reaps more income with MORE volume in sales. *It is really that simple!*

Questions: Please contact Mort Kanovsky at Kanovsky@verizon.net

Memorial Room

Honor your loved ones by purchasing a plaque (\$575) in our Memorial Room.

Additionally, the names and yahrzeit dates will appear on the digital screen, scrolling during the yahrzeit week, high holidays and other chaggim.

Contact Beth El for more information at 856-675-1166

PATHWAY TO INSPIRATION

Do you wish to honor a loved one, that special simcha, a child's favorite teacher, or the memory of someone special? Personalized bricks make a lasting and unique gift.

The cost of a personalized brick starts at \$180 for the first brick and \$118 for every brick thereafter when multiple bricks are purchased together.

To order a personalized brick, please call Davida Chornock at 856-675-1166 ext. 409

NEIGHBORHOOD DELIVERY - CAPTAINS FOR SCRIP

Help deliver scrip orders to families in your neighborhood
Volunteer a small amount of your time and make a big difference at Beth El
For more information on Neighborhood Captains, contact Debbie Hochberg at dsh26@comcast.net

Volunteers Needed in the Beth El Office

If you can donate a few hours, please call Shirley Yaffa at 856-675-1166 or syaffa@bethelsnj.org
Thanks in advance for your help.

WORK THE GIFT SHOP

We need volunteers to work in **Judaically Yours** Please contact Linda Lazarow at: 856-424-3893 or llazarow@msn.com

GREETERS /SUBSTITUTE GREETERS WANTED

SHORT HOURS • NO PAY • LOTS OF SATISFACTION

Greeters welcome people & direct them to the sanctuary, coat room, etc., or offer assistance as needed. Greeters are at the entrance from 9:15am to 10:35am.

For information email or phone Mort Kanovsky at kanovsky@juno.com or 856-424-9372.

MITZVAH MOBILE

VOLUNTEER TO DRIVE A CONGREGANT

I can drive....

_____ One Shabbat a month _____ Every Shabbat
_____ Special Events _____ Evening Services

Name _____
Address _____
Email _____ Phone # _____

Volunteers Needed & Greatly Appreciated

To do occasional light weeding, light trimming & container watering of Beth El's gardens.
Please contact Sharon Deutsch at 856-296-7730 or maggied989@yahoo.com

LIFE AND LEGACY PROGRAM



Beth El is an active participant in a charitable Endowment initiative under the auspices of the Jewish Community Foundation and funded by the Harold Grinspoon Foundation.

Please remember Beth El when you do your Estate Planning. Our Committee will be happy to discuss various options with you. All of us thank those who have helped to ensure Beth El's future.

Our Life and Legacy Donors

Anonymous
Anonymous
Susan & David Backal
Cathy & Marc Backal
Donna & Richard Bell
Pam & Bob Benedon
Jodi Berman
Jocelyn & Mark Borowsky
Ronit & Chris Boyd
Beth & Josh Brodtkin
Amy & Eric Clayman
Arlene & Harris Colton
Fran & Neal Cupersmith
Leila & Adam Cupersmith
June & Steven Eisner & Family

Myra & David Gutin
Deborah & Edward Hochberg
Beth & Harvey Jacob
Adam Kaminer
Sharla & Mort Kanovsky
Amy & Barnard Kaplan
Jerome Katz
Alison & Andrew Keim
Deborah Shore & Jonathan Korn
Helene & Rabbi Aaron Krupnick
Michael Landsburg
Fran & Leon L. Levy
Suzanne & Victor Levy
Judy & Don Love
Sheri & Jason Pecarsky

Lynn Goldman Paul
Arlene & Ed Plasky
Hilary & Harry Platt
Ilene Rosen & P. Todd Rowan
Sharon & Adam Sackstein
Karen & David Schlessel & Family
Harriet Schulman
Faye & Gary Shapiro
Jennifer Sholder
Juli Mandel Sloves & Glenn Sloves
Lauren & Jonathan Soll
Tami Bogutz Steinberg
Judith & Stuart Wasserlauf
Jennifer & Jim Weiss
Jason and Leah Wolf

ENDOWMENT FOR THE FUTURE

Giving Today to Secure Tomorrow

Making a commitment to Beth El's Endowment Fund will help ensure funds will always be available to support & enhance the many important, religious, educational & communal services that Beth El provides to its members & community. There are many ways to participate: make an immediate contribution of cash, appreciated securities, real estate, art work or other collectibles; include a bequest to Beth El in your will; designate Beth El as a beneficiary of a life insurance policy; establish a donor advised fund dedicated to the support of Beth El; establish a charitable gift annuity or a charitable remainder trust.

For more information as to how you can participate in building Beth El's Endowment for the Future, please complete this coupon & return it via 1st class mail or e-mail.

Name: _____ E-mail: _____

Street: _____ City _____ State _____ Zip: _____

Please send me information on participating through: Bequests Life Insurance Donor Advised Fund
Charitable Gift Annuities Charitable Remainder Trust Immediate Gift of Cash or Appreciated Assets

I have already included Beth El in my estate plans. Please let me know how my plan can be included in Beth El's *Endowment for the Future*.

Return to: Congregation Beth El, Endowment for the Future, 8000 Main Street, Voorhees, NJ 08043
E-mail: jlaster@bethelsnj.org

Home care for infants through seniors
including post-op care, special needs, and respite care.



**Be
a-ok!**

856.685.5700
alephsnj.org

A DEPARTMENT OF



Inspiring Wellness!

Independent Living
Assisted Living & Memory Care
Rehabilitation & Nursing Care

(856) 679-2362

www.lionsgateccrc.org

1110 Laurel Oak Road | Voorhees



LIONS GATE

Lifestyle. Care. Community. Tradition.

Like us on

Lions Gate has been made possible, in part, through the generosity of the Raymond and Gertrude R. Saltzman Foundation.

DIRECTORY

CLERGY & STAFF

Aaron Krupnick, Rabbi
akrupnick@bethelsnj.org

Alisa Pomerantz-Boro, Hazzan
hazzanapb@bethelsnj.org

Andy Green, Assistant Rabbi
agreen@bethelsnj.org

Isaac Furman, Rabbi
rif1@comcast.net

Josh Laster, Executive Director
jlaster@bethelsnj.org

Rabbi Nogah Marshall, Educational Director
nmarshall@bethelsnj.org

Dina Eliezer, ECC Director
deliezer@bethelsnj.org

Tamar Barkan, Director of Membership, Events, and Programming
tbarkan@bethelsnj.org

Mike Mellace, Comptroller
mmellace@bethelsnj.org

Nancy Barr, Staff Accountant
nbarr@bethelsnj.org

Laura Bruzzese-Coscia, Accounts Receivable
lbruzzese@bethelsnj.org

Davida Chornock, Marketing, Communications, and Membership Specialist
dchornock@bethelsnj.org

Sarah Donsky, Educational Programs Administrator
sdonsky@bethelsnj.org

Belle S Hirn, ECC Administrative Assistant
eccoffice@bethelsnj.org
bhirn@bethelsnj.org

Amy Kaplan, Librarian
akaplan@bethelsnj.org

Holly Max, ECC Assistant Director
hmax@bethelsnj.org

Binyamin Stone, Youth Director
bstone@bethelsnj.org

Leora Waiche, Clergy Executive Assistant
lwaiche@bethelsnj.org

Shirley Yaffa, Receptionist
syaffa@bethelsnj.org

BOARD OFFICERS

President:
Lauren Soll
lmsorgnut@gmail.com

Vice Presidents:
David Backal
dcbacal@unitedplanners.com

Josh Brodtkin
amazingmed@hotmail.com

Ben Levin
levin@hylandlevin.com

Karen Schlessel
schlessel@comcast.net

Treasurer:
Stuart Sauer
royalcomputing@comcast.net

Financial Secretaries:
Cathy Backal
cbackal@comcast.net

Karin Elkis
karinelkis@gmail.com

Recording Secretary:
Faye Shapiro
faye.shapiro@comcast.net

ARMS

Habonim:
Judy Simkin - lensim@comcast.net

Men's Club:
Larry Hanover - hanovers4@comcast.net

Singles:
Norma Kamis - normatrack@verizon.net

Sisterhood:
Renee Kessler - rbkess@comcast.net

Young Families Group:
Mira Aumiller - msaumiller@yahoo.com

USY:
Sophia Sloves - sophia.sloves4@gmail.com

VOLUNTEER OPPORTUNITIES

Adult Education:
Zalman Agus - agus@upenn.edu
Patti Bourke - pattigail1@comcast.net

Board Governance & Development:
Karin Elkis - karinelkis@gmail.com

Boker Tov Committee:
Anouk Backal - dutchnouky@yahoo.com

Budget & Finance Committee:
Ben Levin - levin@hylandlevin.com

Catering Committee:
Robin Cohn - chrobn@aol.com

Cemetery Committee:
Harry Platt - plattmemorial@comcast.net

College Connection:
Gloria Back - gback5454@aol.com

Early Childhood Center Committee:
Dina Silverman - dinagoldsilver@gmail.com

Endowment Committee:
Jocelyn Borowsky - jdmborowsky@comcast.net

Fundraising Committee:
Sharon Sackstein - njsharona@aol.com
Heidi Silverberg - mommyhrs@aol.com

House Committee:
Mort Kanovsky - kanovsky@juno.com

Israel Committee:

Marketing Committee:
Nancy Cutler - nbcproductions@comcast.net

Membership Committee:
Debra Kelberg - dkelberg@aol.com

Nichum Avelim Committee:
Marsha Goodman - margood1941@gmail.com

Personnel Committee:
Caroline Austin - carolineaustin@verizon.net

Religious School Committee:
Debra Kelberg - dkelberg@aol.com
Marla Glauser - mglauser@verizon.net

Ritual Advisory Committee:
Jay S. Ruder, Esq - jruder@archerlaw.com

Scrip Committee:
Debbie Hochberg - dsh26@comcast.net

Security Committee:
David Breslau - davidbreslau.db@gmail.com

Social Action:
Rachel Miller - rvk504@aol.com

Technology Committee:
Michael Silverman - silvermanm@icloud.com

Youth Commission:
Juli Sloves - jmsloves@comcast.net

Follow us on Instagram!

<https://www.instagram.com/BethEISNJ/>



Like us on Facebook!

<https://www.facebook.com/CongBethEISNJ>



8000 Main Street
Voorhees, NJ 08043

Address Service Requested

Non-Profit Org.
U.S. Postage
PAID
Cherry Hill, NJ
Permit No. 453

Website: www.bethelsnj.org ▪ Telephone: (856) 675-1166 ▪ Fax: (856) 489-3280

BETH EL NEWS EDITOR
Davida Chornock - dchornock@bethelsnj.org

Congregation Beth El
is Proud to Present:

ROCKET SCIENTIST ARI SACHER

THURSDAY, JANUARY 26, 2017
6:15PM Meet and Greet sponsor cocktail hour
7PM Program

[Click Here For Details](#)

Congregation Beth El

Presents

Every Voice Gala Concert

Honoring
Hazzan Alisa Pomerantz-Boro's
Installation as International President
of the Cantors Assembly

Wednesday, May 24, 2017 at 7PM

To purchase tickets: <https://bethelsnj.org/every-voice/>

A great year of programming ahead - be a part of it!

Corporate and individual sponsorships available for our 2017 events.

Contact Tamar Barkan to learn more at tbarkan@bethelsnj.org